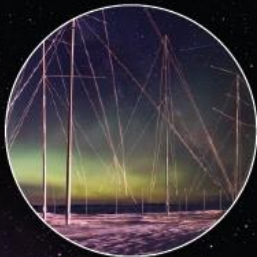


*SANSA act mandates SANSA to Acquire, assimilate and disseminate satellite imagery for all organs of state.*

*SANSA appointed according to SDI Act as the Base Data Custodian for Satellite imagery.*



**Earth Observation Programme**

**Andiswa Mlisa**

Space for National Development  
12 – 14 November 2019  
Pretoria, South Africa

# Applications supported by SANSa SENSOR PORTFOLIO



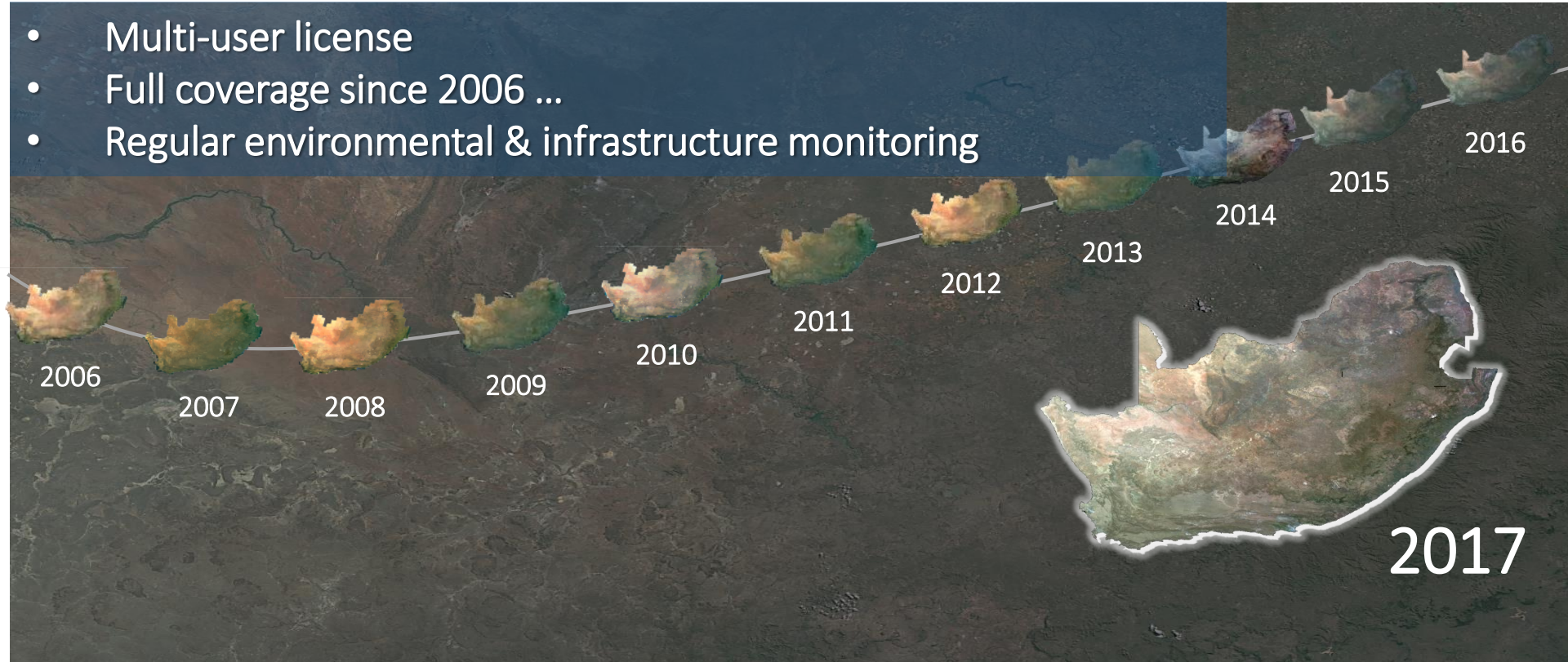
## End Users



\* Only ATNS data available.  
 ^ Only remote sensing companies responded to survey.  
 # Contract revenue, parliamentary grant, research grants, ring-fenced transfers and interest & other income

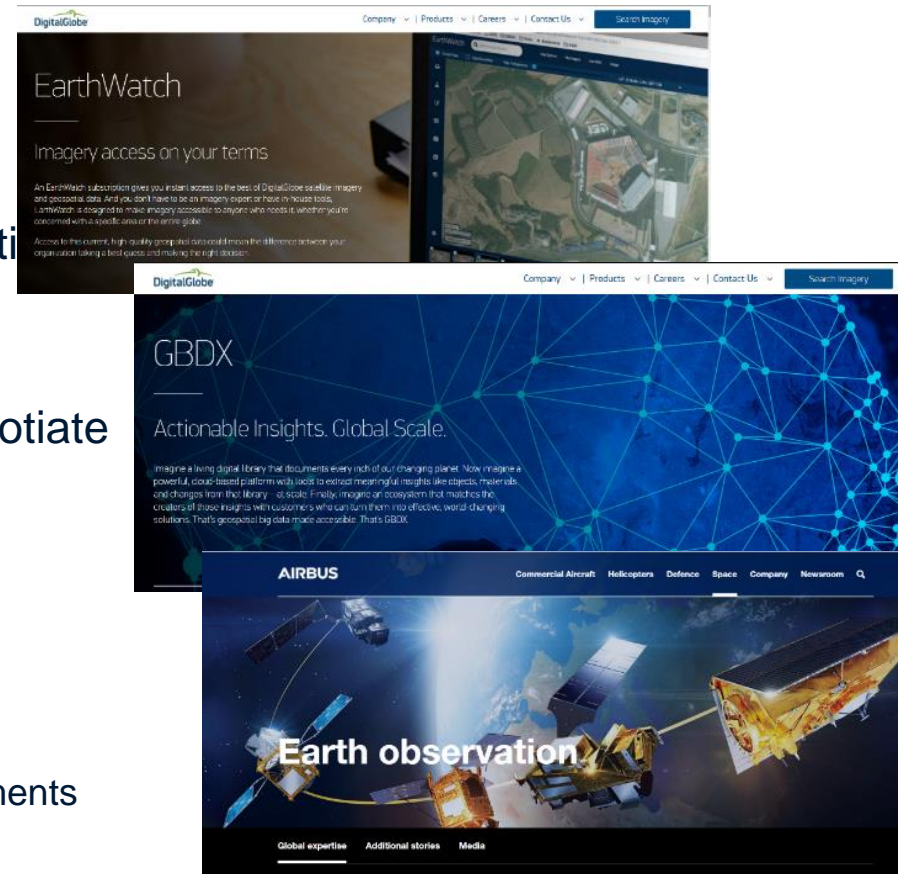


- Multi-user license
- Full coverage since 2006 ...
- Regular environmental & infrastructure monitoring

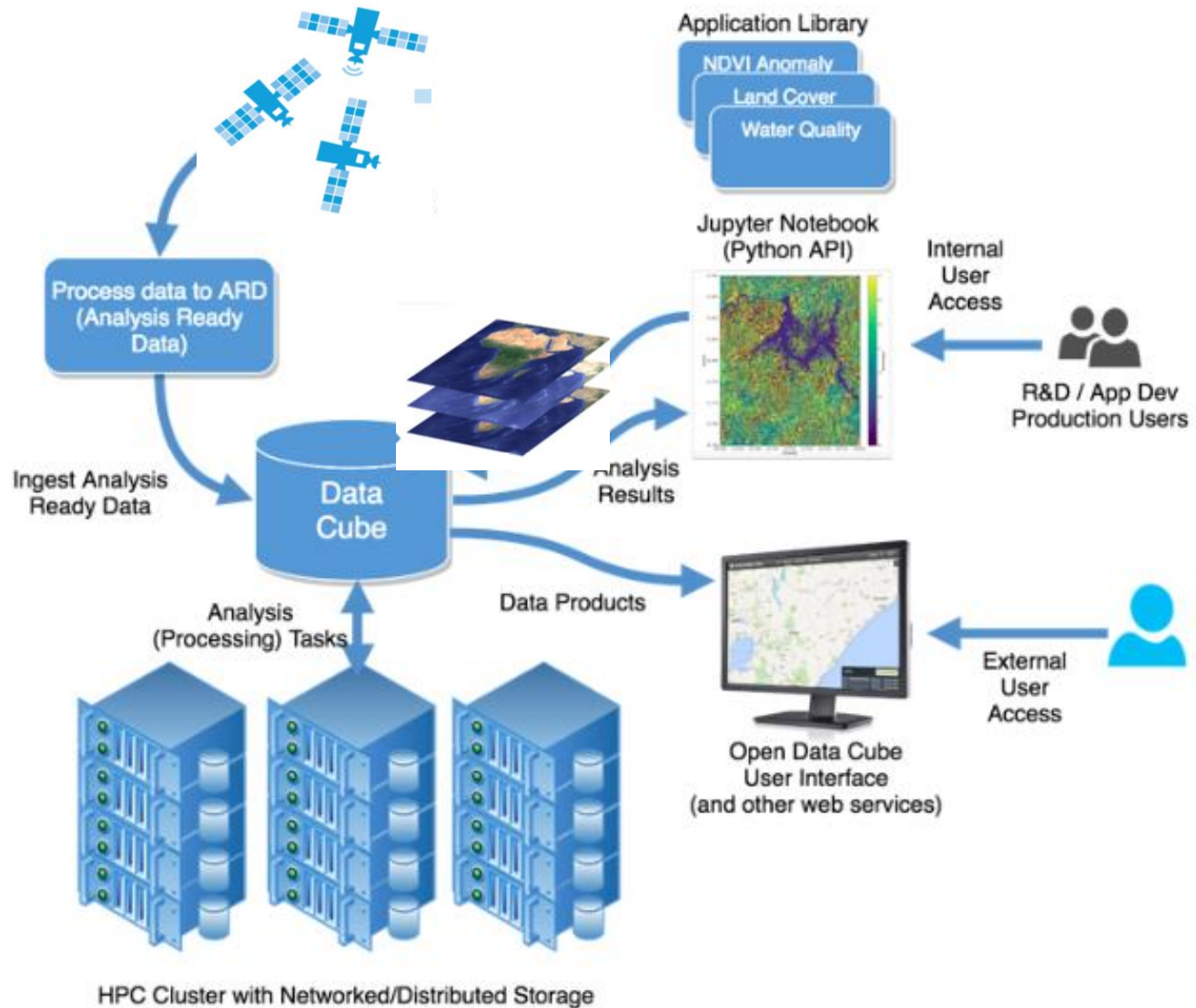


# Value of Government Licence – Collaboration

- Driven by user needs
- Access to multiple sensors
- Not locked into one vendor
- Government licence agreements with multiple service providers
- Buying power for government
  - Economies of scale – able to negotiate better rates
  - Broader choice of sensors for government
- Timely access to data
- Online access
  - Reduces individual infrastructure investments
- Requires minimal financial commitment

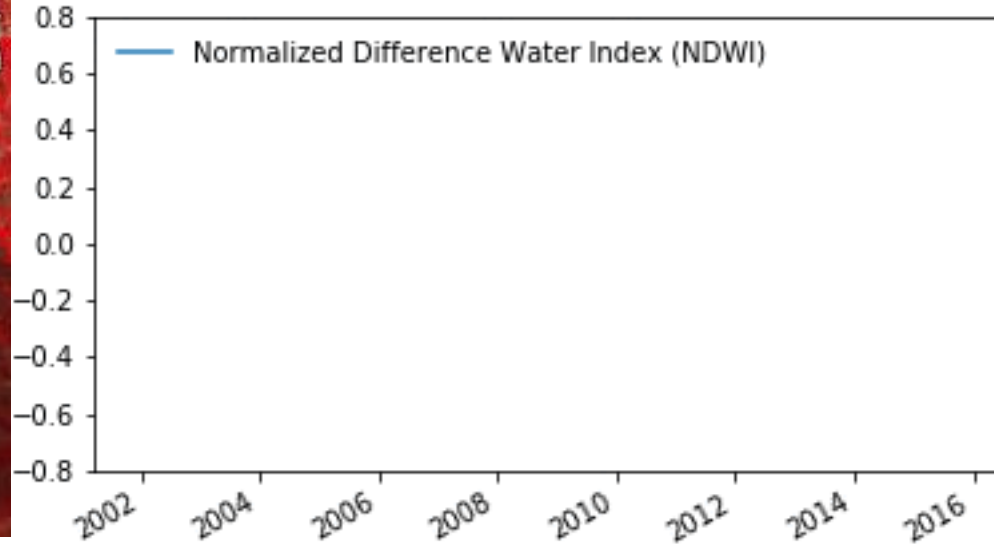


# Digital Earth South Africa



# Digital Earth South Africa

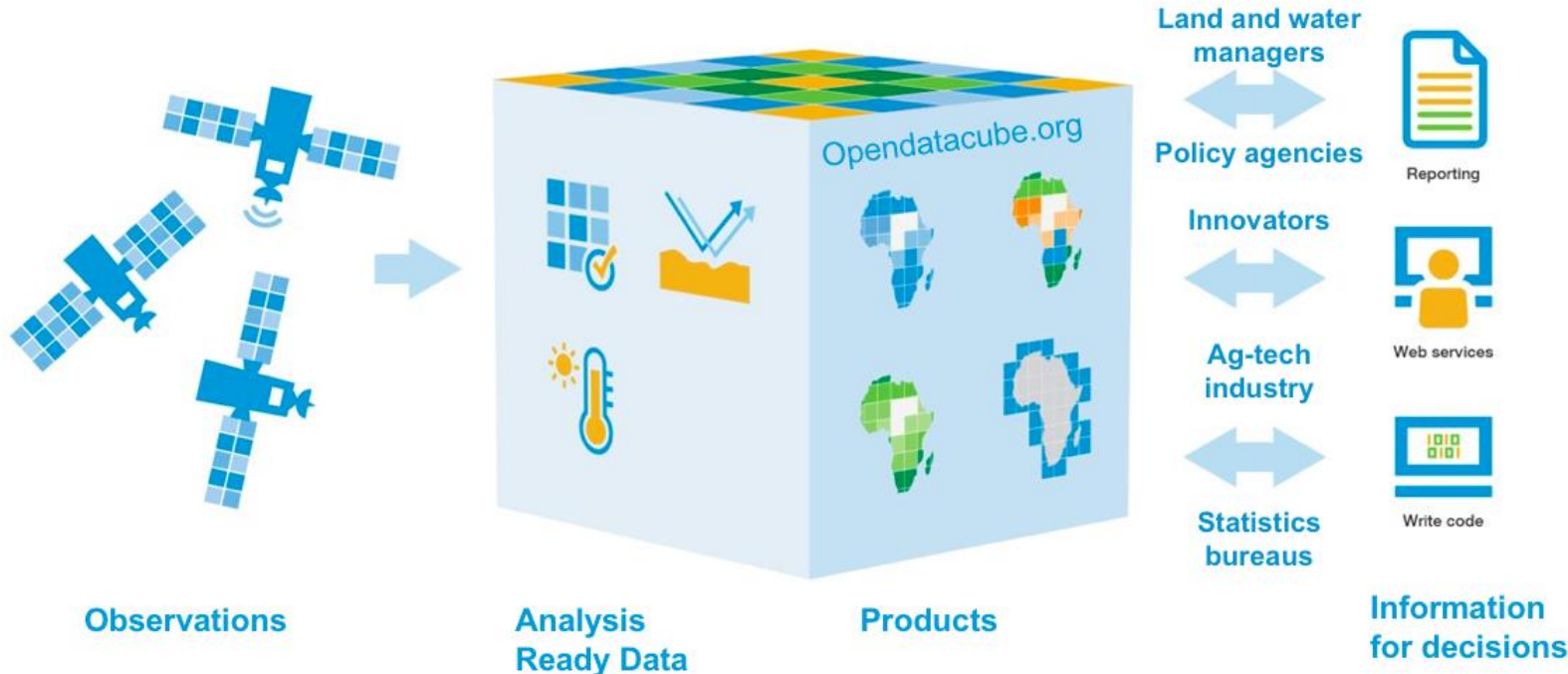
## Monitoring Change in water level, Theewaterskloof Dam



# DESA to Operationalize Services



## Connecting *observations* to *decisions*





# Governance Principles

## Open and free data

- Interoperability
- Privacy and Integrity

## Operational service

- Continental-scale
- Sustainable
- Domain expertise

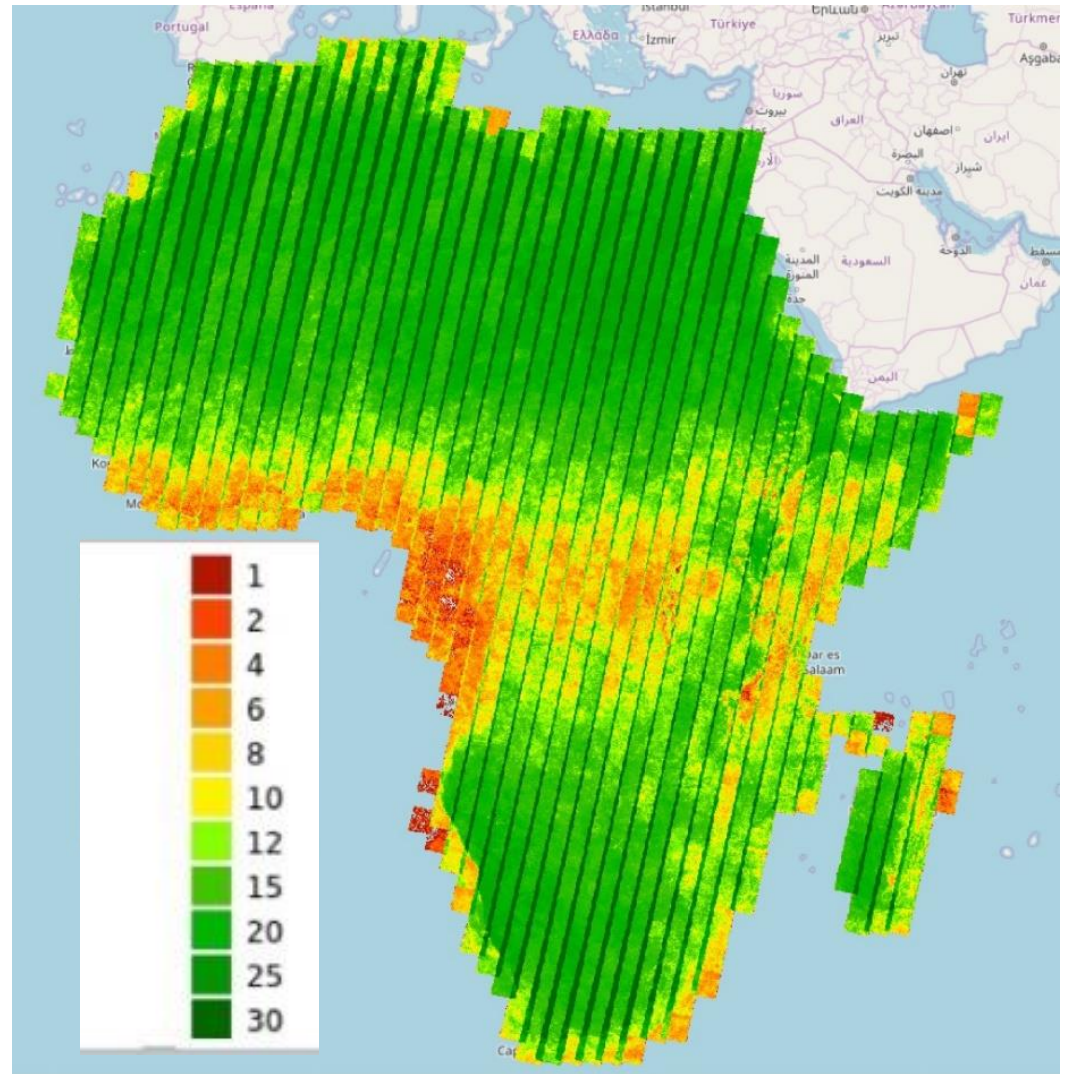
## Accountability and transparency

- Responsive to African priorities
- Agile, nimble and action oriented

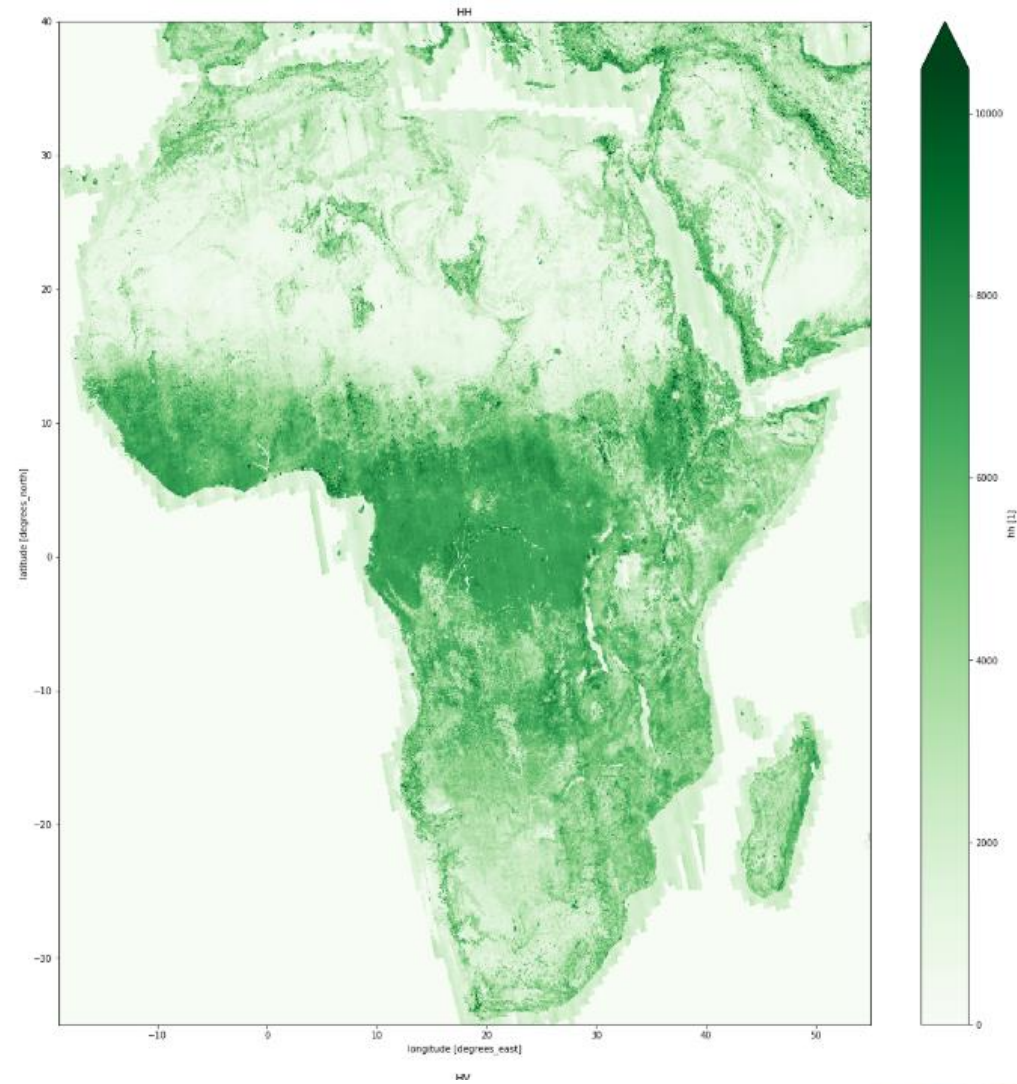
## Diversity and inclusion

- Multi-sector perspectives
- Span data communities
- Foster collaboration

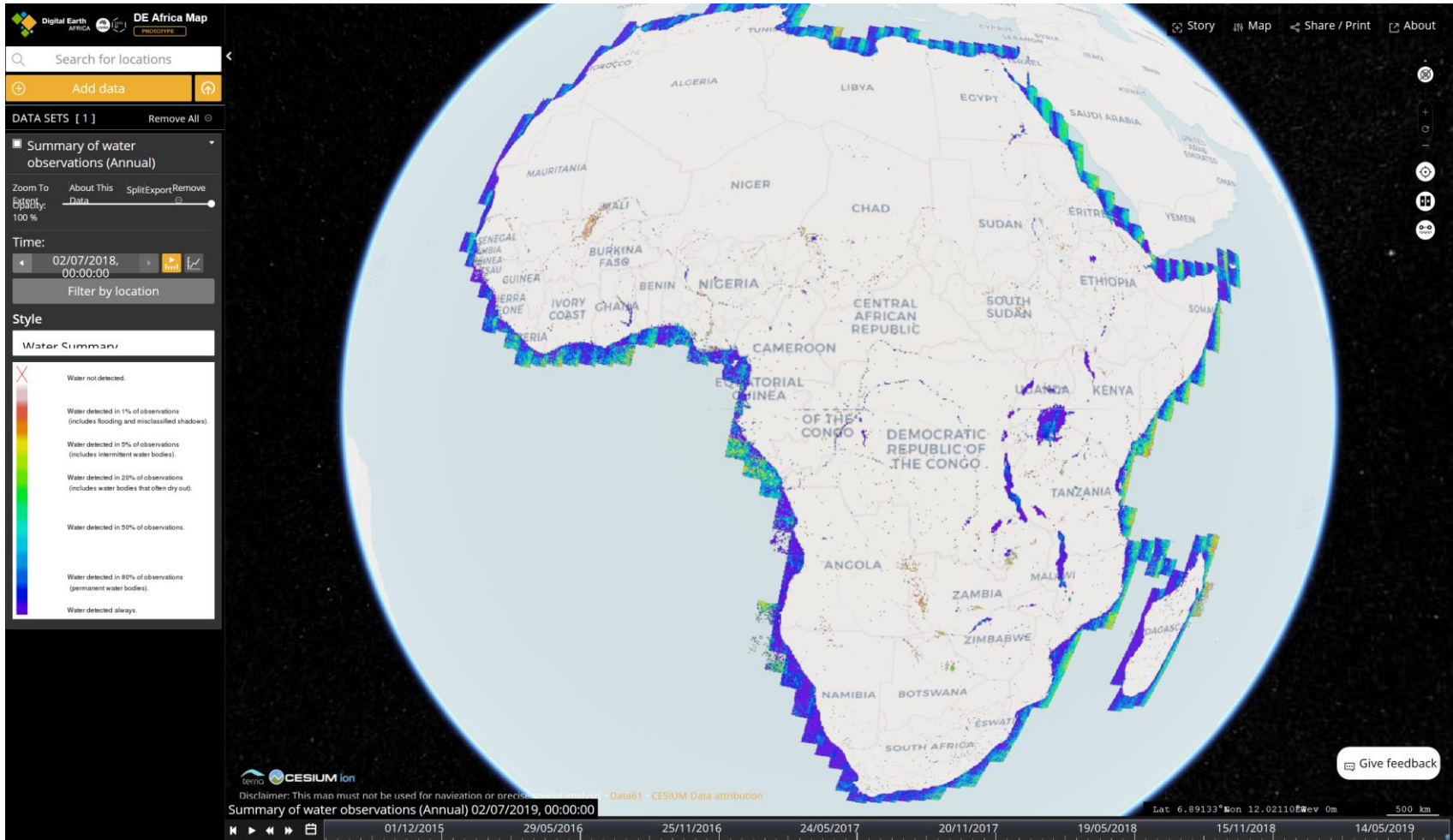
DE Africa  
Landsat-8, clear  
observations, 2018,  
for Africa



# DE Africa – ALOS radar dataset



# Provisional Water Observations for ALL OF AFRICA!



# DEAfrica Platform

- DE Africa Map - <http://maps.digitalearth.africa/>
- OGC Web Services - <https://ows.digitalearth.africa/>
- Explorer - <http://explorer.digitalearth.africa/>
- Public Data bucket - <https://data.digitalearth.africa/>
- Jupyter Hub - <https://sandbox.digitalearth.africa/>
- GitHub - <https://github.com/digitalearthafrica>
- Slack channel - #de-Africa <https://opendatacube.slack.com/>
- Esri Africa GeoPortal <http://www.africageoportal.com/>

# Africa Geoportal – ESRI partnership

<http://www.africageoportal.com/>



## The Africa GeoPortal

Discover Africa using location intelligence

### What is in the Africa GeoPortal?

The Africa GeoPortal is the best location for geospatial tools data and training, free for users working on Africa geospatial challenges.